

WEIGHT CLASS
6.5 TONNE
| TCR50-2 |



STAGE V ✓
READY



TRACKED DUMPER

takeuchi
Japanese for Reliability

New TCR50-2 Tracked Dumper with left & right skip-tip function

The new TCR50-2 tracked dumper offers greater functionality, performance, comfort and serviceability.

With an ample 65 degree skip tip angle and 3,700kg maximum loading weight, operators' always get a maximum load discharged with a single operation.

The TCR50-2 features left and right skip-tip functionality (180 degree) offering efficient sideways dumping in restricted areas, this limits the need to continually reposition the machine.



MAXIMUM ACCESS & EASY SERVICE

Wide opening maintenance cover provides exceptional access to engine and routine inspection points.

Standard auto fuel transfer pump enables operator to refill the tank with fuel more easily and quickly.



TFM - TAKEUCHI FLEET MANAGEMENT

Takeuchi Fleet Management is designed to help you better manage your fleet and lower your overall operating costs.



PROTECT YOUR INVESTMENT

The TCR50-2 now comes with the TSS **Takeuchi Security System** as standard.



With a reputation for reliability, Japanese build quality makes all the difference.



COMFORTABLE OPERATOR STATION

A completely redesigned operator's station features an intuitive 5.7" colour multi-informational display with standard camera rear view function, adjustable suspension seat, radio with USB support and large cup holder for superior operator comfort and less fatigue. Air conditioning as standard.



FULLY HYDRAULIC CONTROL

Hydraulic joystick controls deliver smooth operation for travel function and dump body function while foot throttle allows more economic and intuitive operation for engine speed.

ENGINE

- EU Stage V
- Turbocharged
- Automatic Fuel Bleed System
- DOC+DPF+SCR Exhaust After Treatment
- Double Element Air Cleaner
- Automatic Deceleration
- High Capacity Fuel Tank
- Engine Safety Start System on Left Console
- Engine Auto Stop
- Fuel Transfer Pump
- Parking Brake

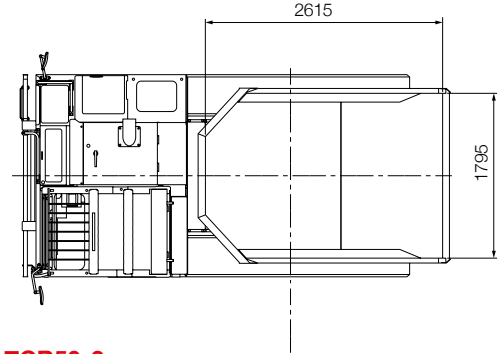
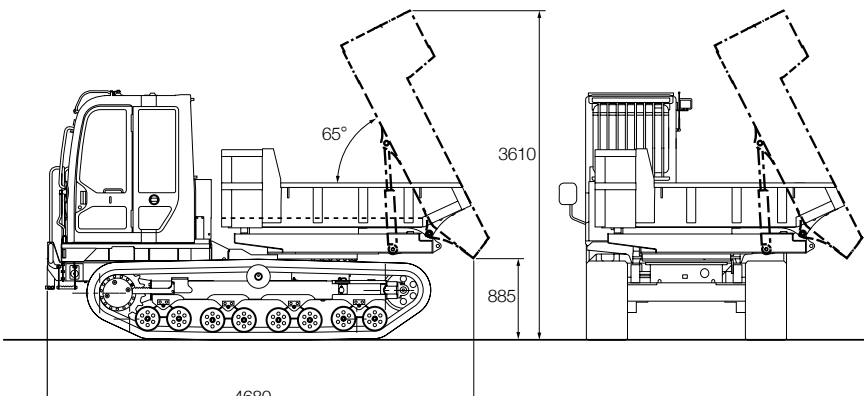
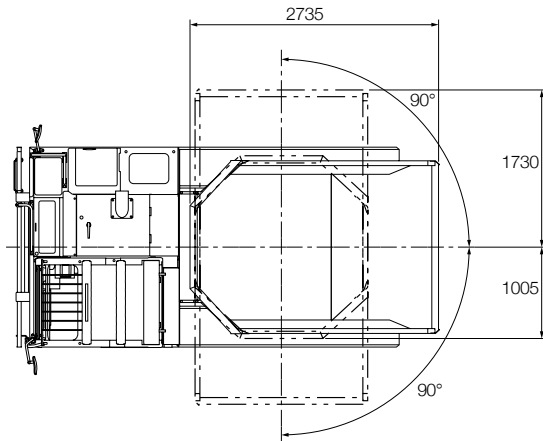
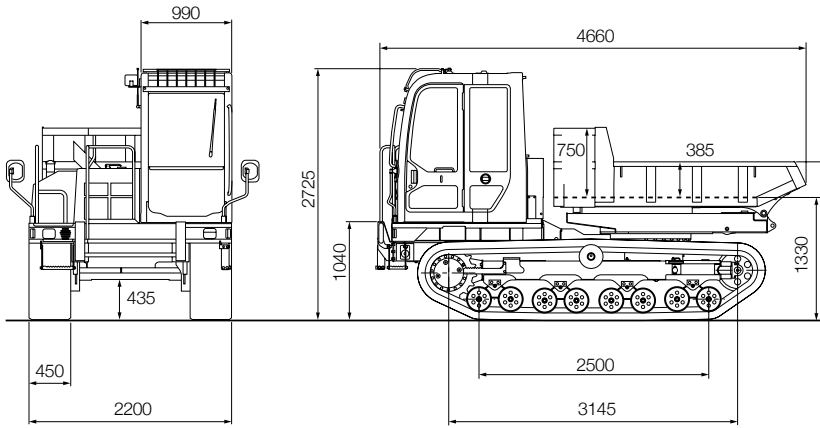
UNDERCARRIAGE & FRAME

- Double Flanged Track Rollers
- 2-Speed Travel with Automatic Shift
- High Torque Planetary Final Drive
- 450 mm Rubber Crawlers

ELECTRICAL

- 5.7" Color Multi-Informational Display
- Sealed Rocker Switches
- 12 volt System with 80 amp Alternator
- LED Lighting - Forward Facing, Front and Rear Cab
- Travel Alarm
- Beacon Lamp Switch
- Rear View Monitor
- Air Conditioning
- Immobiliser





TCR50-2

Standard UK Specification

Engine	
Make	YANMAR
Model	4TNV94FHT-NTBC
Rated Output (kW)/rpm	88.4 kW / 2,500 min ⁻¹
Displacement (ml)	3053
Amount of CO2 emission* (kWh)	732
Starter (kW)	12-3
Alternator (kW)	12-0.96
Battery (IEC 60095-1) (V-A.h)	12-90
CCA (A)	895

Operating Performance	
Operating Weight (kg)	6550
Dumped Body Capacity - Heaped (m ³)	2.055
Struck (m ³)	1.15
Maximum Loading Weight (kg)	3,700
Travel Speed: 1st (km/h)	7.0
2nd	9.5
Gradeability	30°
Ground Pressure:	
Dump Body Full (kPa)	42.0
Dump Body Empty (kPa)	27.0

Hydraulic System	
P1.P2	Variable Displacement Pump
Flow Rate	122.5m L/min
Relief Pressure	34.5 MPa

Fluid Capacities	
Engine Lubrication (l)	10.5
Cooling System (l)	18.5
Fuel Tank (l)	127.0
Hydraulic Reservoir Capacity (l)	44.0
Hydraulic System (l)	84.0
DEF Tank (l)	13.8

Safety & Health	
Vibration - Levels Hand / Arm	< 2.5 m/s ²
Body	< 0.5 m/s ²
Noise Level - Sound Power Level	LWA 102 dB
Slew Brake	Wet Friction Plate

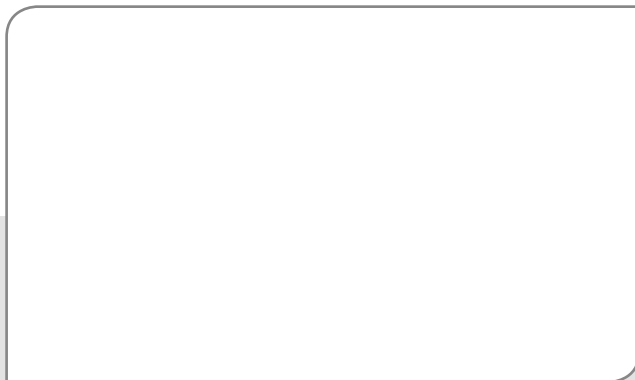
All dimensions unless otherwise stated are in millimeters.

*: The amount of CO2 emission refers to the value obtained by testing the parent engine representing the engine type (engine family member) being used; it shall not guarantee the performance of the machine.

12/2024

For more information locally

call us direct, or contact:



Takeuchi Mfg (UK) Ltd, Unit E2B Kingsway Business Park,
John Boyd Dunlop Drive, Rochdale, Lancashire OL16 4NG
Tel: 01706 657 722 Fax: 01706 657 744

Southern Depot at 20 Colthrop Business Park
Colthrop Lane, Thatcham, Newbury, Berks RG19 4NB
Tel: 01635 877 196 Fax: 01635 877 195

www.takeuchi-mfg.co.uk Email: sales@takeuchi-mfg.co.uk

**FULL
3-YEAR
3,000 HOUR
WARRANTY**

Takeuchi machines come with a full 3 year/3000 hour warranty as standard, terms and conditions apply.

Before fitment of a hydraulic attachment, machine auxiliary pressure and flow should be accurately measured. For all lifting specifications please refer to the lift charts on the Takeuchi website or operator manual.

In accordance with our established policy of constant improvement, we reserve the right to amend these specifications at any time without notice. Photographs shown may feature non-standard equipment.

TAKEUCHI
Japanese for Reliability